

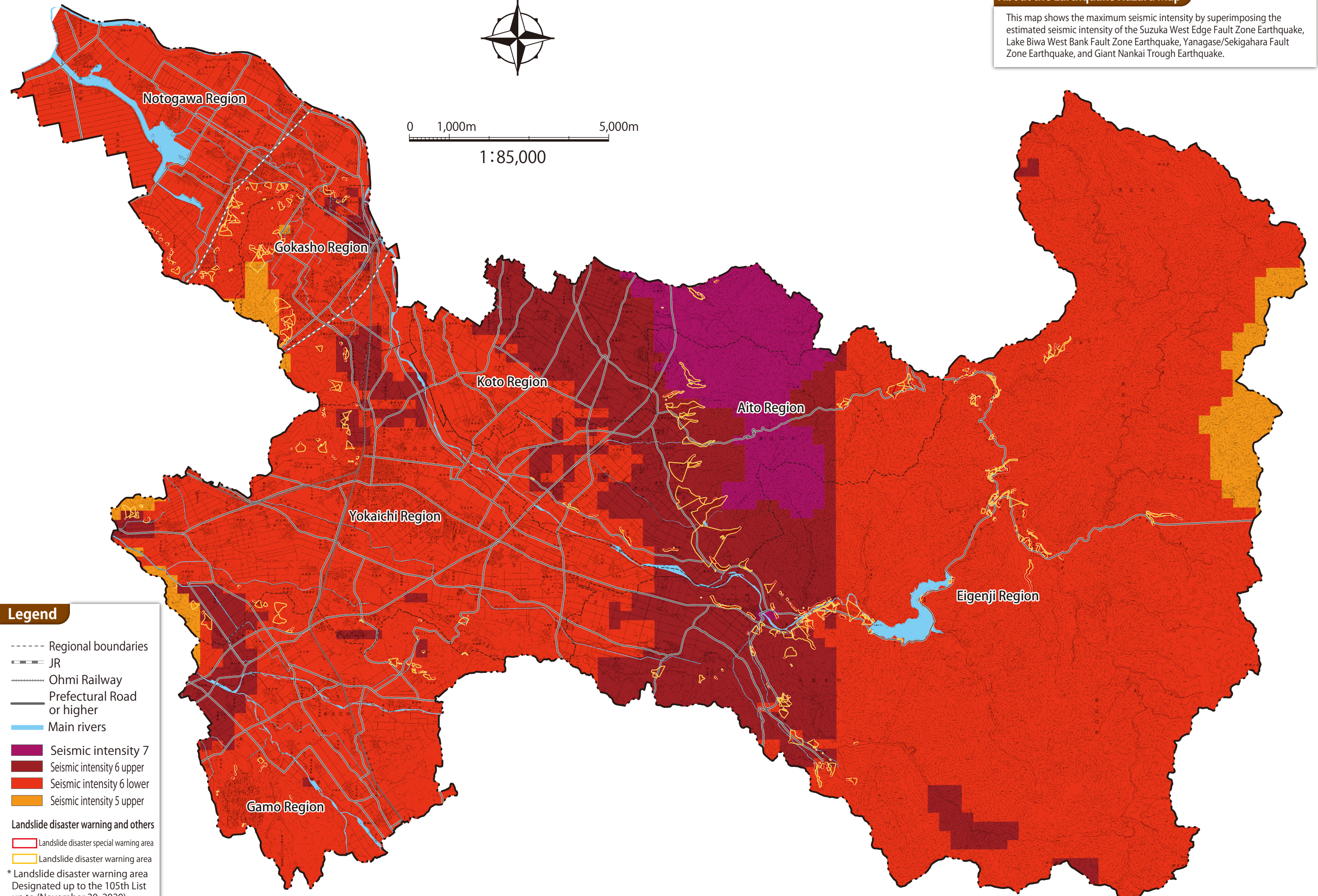
## 2-4 Earthquake Hazard Map

### About the Earthquake Hazard Map

This map shows the maximum seismic intensity by superimposing the estimated seismic intensity of the Suzuka West Edge Fault Zone Earthquake, Lake Biwa West Bank Fault Zone Earthquake, Yanagase/Sekigahara Fault Zone Earthquake, and Giant Nankai Trough Earthquake.



0 1,000m 5,000m  
1:85,000



### Legend

- Regional boundaries
- JR
- Ohmi Railway
- Prefectural Road or higher
- Main rivers

- Seismic intensity 7
- Seismic intensity 6 upper
- Seismic intensity 6 lower
- Seismic intensity 5 upper

#### Landslide disaster warning and others

- Landslide disaster special warning area
- Landslide disaster warning area

\* Landslide disaster warning area  
Designated up to the 105th List  
up to (November 20, 2020)