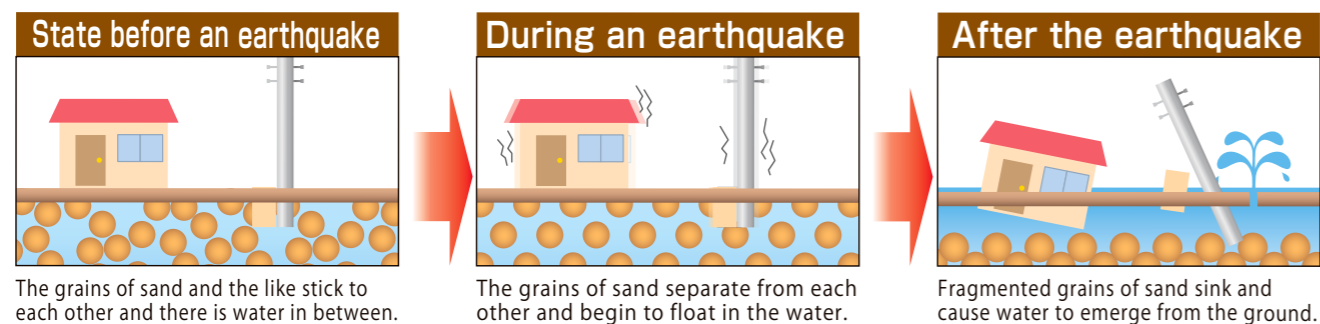


## 2-5 Liquefaction

Loosely collected sand deposits and the like temporarily become softened as though they were liquid when shaken violently by an earthquake. This causes the ground that had been firmly supporting buildings to shake as though it were liquid by an earthquake thereby causing the building to tilt and sink. This causes great physical damage to the building.

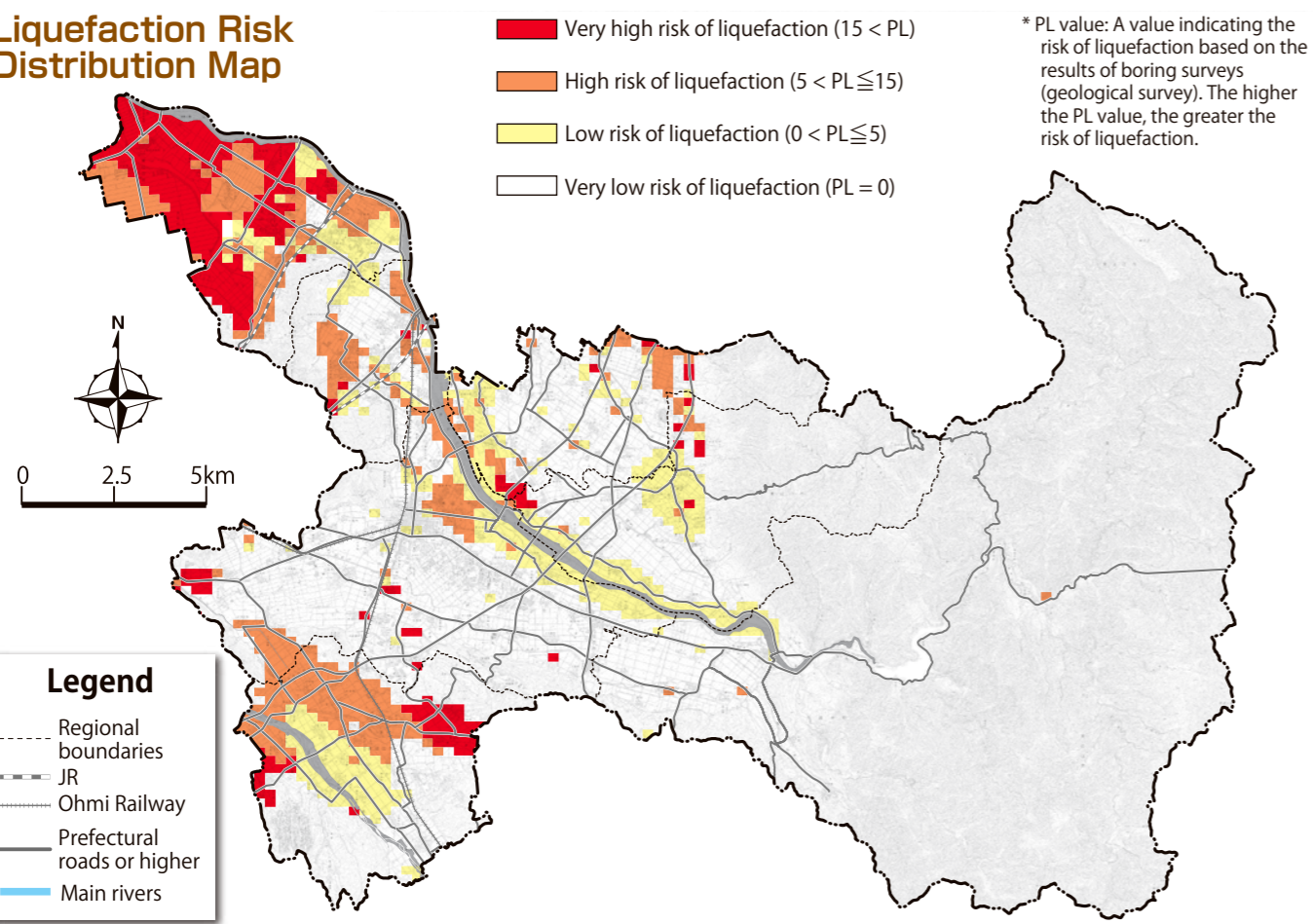
### Liquefaction System



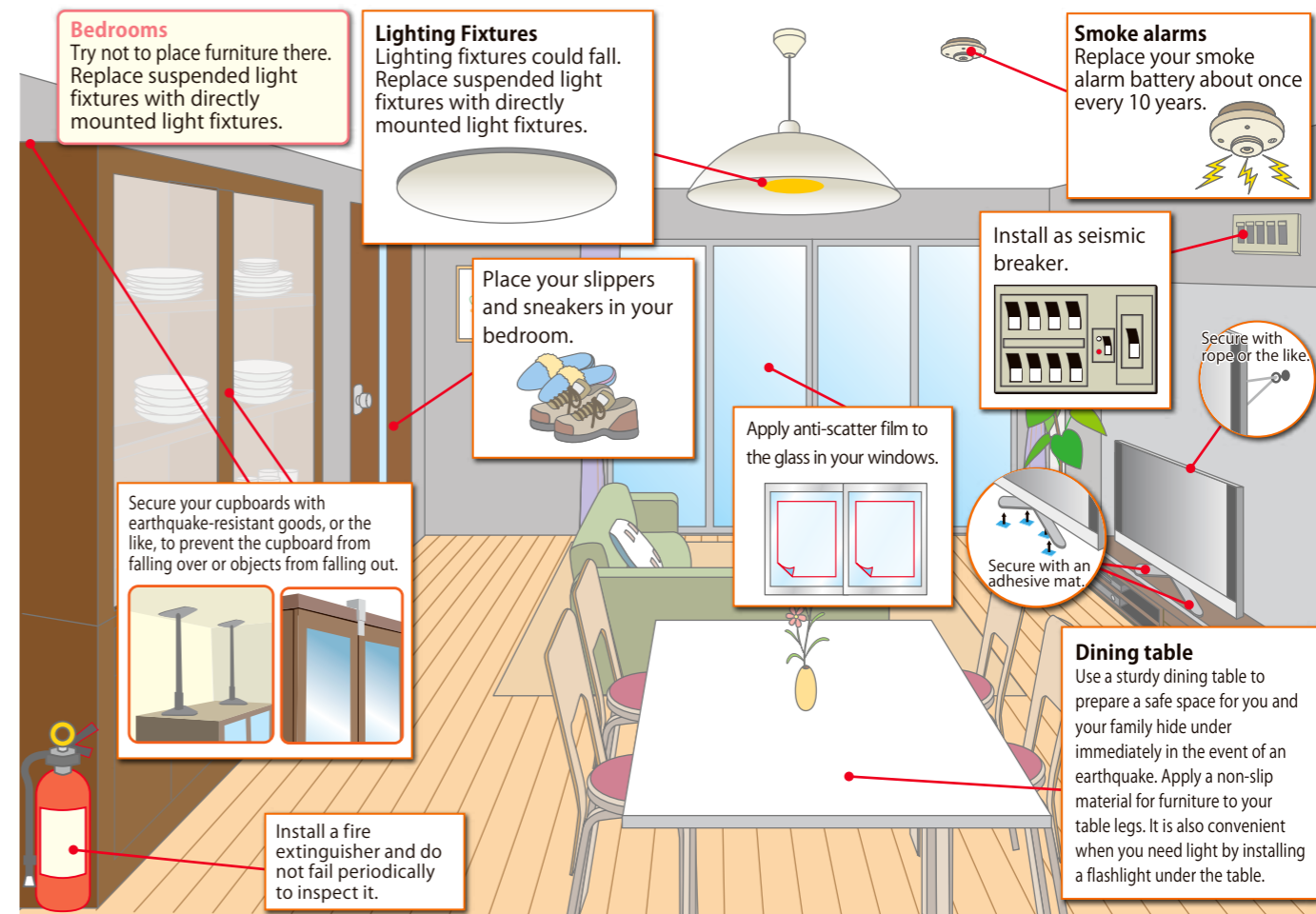
### Liquefaction Hazard Determination Category

Liquefaction risk	Low			High
Determination of liquefaction hazard based on PL value	PL=0	$0 < PL \leq 5$	$5 < PL \leq 15$	$15 < PL$
	Very unlikely to receive damage by liquefaction	Liquefaction is unlikely to cause damage	Possible damage from liquefaction	Very likely to receive damage by liquefaction

### Liquefaction Risk Distribution Map



## 2-6 Always Be Prepared for an Earthquake



### Check the earthquake resistance of your home and make it earthquake-resistant!

Old buildings (especially those built before 1981) and block walls tend to be easily damaged in earthquakes. As a result, the danger level may be higher in areas where there are many older buildings.

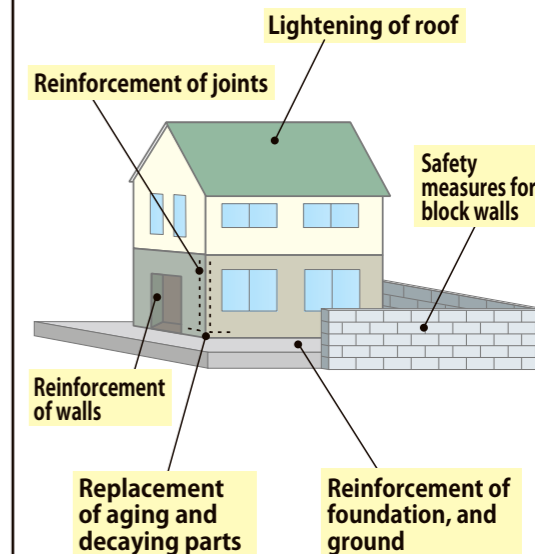
● Use the city's earthquake-resistant business to diagnose your home for earthquake-resistance, and to strengthen your home's earthquake-resistance. Also, take safety precautions for block walls.

- Free wood-frame housing seismic diagnosis (wood-frame houses whole build started before May, 1981)
  - Financial subsidies for wood-frame housing seismic resistance and barrier-free renovation project expenses
- Contact: Urban Development Department, Housing Section (Tel: 0748-24-5669)**

- Subsidies for expenses related to earthquake resistance projects such as concrete block wall renovations (removing or rebuilding dangerous concrete block walls along evacuation routes)
- Contact: Urban Development Department, Building Guidance Division (Tel: 0748-24-5656)**

- Popularizing projects such as earthquake-resistant shelters for individual wood-frame homes
- Contact: Disaster Prevention and Crisis Management Division, General Affairs Department (Tel: 0748-24-5617)**

- Example of house seismic resistance



\* There are requirements to be subject for coverage in the system. Contact each office in advance.