

3-2 Landslides that Strike Higashiomi City

There are three types of landslide disasters. (In this map, the three are shown collectively as landslide disasters.)

Cliff failure (collapse of steep slope)



Cliff failures are a phenomenon where a steep slope of soil and sand collapses because of rainwater that has soaked into the ground during a heavy rain or the like.

Mudslide



A mudslide is a phenomenon where dirt and sand that have collected at the bottom of a valley because of heavy rain or because of a collapse from the side of the mountain become mixed with water and are integrated and flow down the valley all at once.

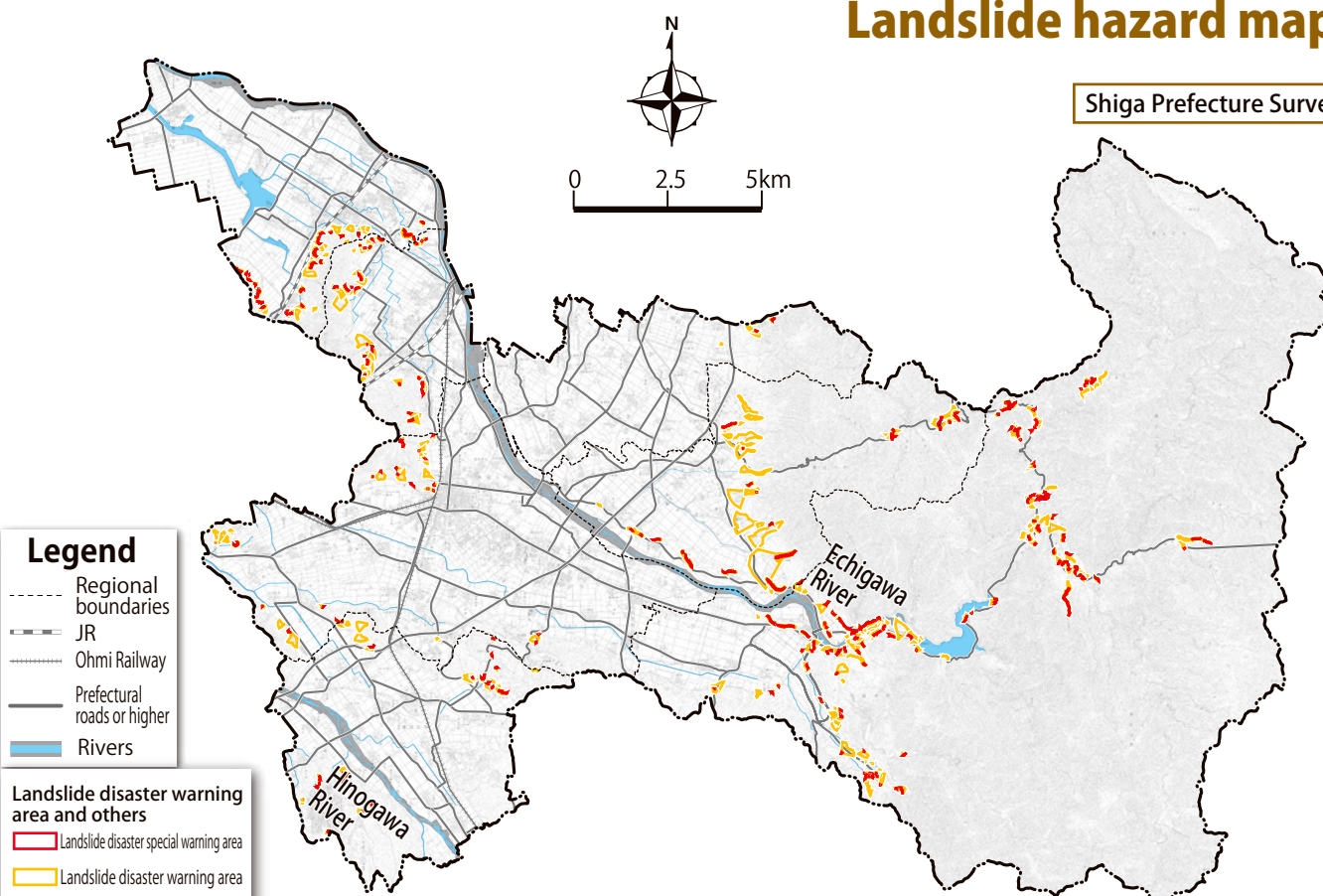
Landslide



A landslide is a phenomenon where the ground begins to move at the boundary of slippery strata in the ground, on a slope at the foot of a mountain or a hill because of rain or an increase in groundwater.

Landslide hazard map

Shiga Prefecture Survey



Legend

- Regional boundaries
- JR
- Ohmi Railway
- Prefectural roads or higher
- Rivers

Landslide disaster warning area and others

- Landslide disaster special warning area
- Landslide disaster warning area

※Specifies up to the 105th landslide disaster warning area Lists up to (November 20, 2020)

Landslide disaster special warning area

An area of the landslide disaster special warning area where damage to buildings is likely, and there could be significant injury to residents; There is a permit system for specific development activities, structural regulations of buildings, recommendations for relocation of buildings, and support measures.

Landslide disaster warning area

An area where there is a risk of an earthquake disaster. In the warning areas, an alert evacuation system has been developed, such as the dissemination of hazards and the preparation of an alert evacuation manual.

Landslide disaster special warning area

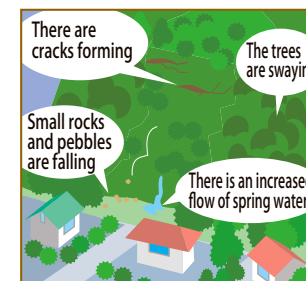
Landslide disaster warning area

Things you should learn!

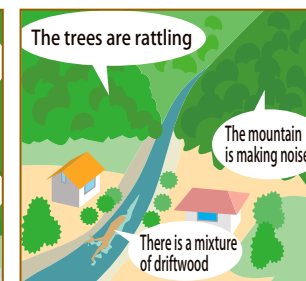
Landslide disaster precursors

Be aware of the warning signs of a landslide disaster and evacuate as soon as you note the risk. Absolutely never approach a dangerous area.

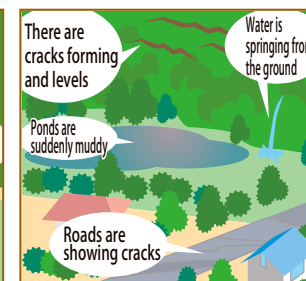
Cliff failure precursors



Mudslide precursors



Landslide precursors



Heavy rain caused by a linear precipitation zone

Linear precipitation zones are rainfall zones with strong rainfall ranging from approximately 50 to 300 km in length and 20 to 50 km in width. They are created by successively developed rain clouds (cumulonimbus cloud *) in rows and by organized cumulonimbus cloud passing or stagnating at approximately the same location over several hours.

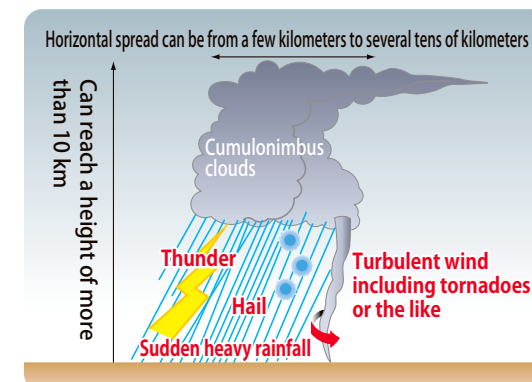
※Be careful of cumulonimbus cloud (thunderclouds)

When the atmosphere is unstable, cumulonimbus cloud (thunderclouds) will develop and they can cause sudden and intense rainfalls. They are also prone to develop into thunderstorms and even tornadoes.

Signs of approaching developed cumulonimbus cloud

- Dark clouds are approaching and the surrounding area is suddenly darker
- Lightning strikes can be heard in the distance, and lightning can be seen nearby
- A faint, cold wind begins to blow
- Large raindrops begin to fall, or even hail can begin to fall.

Heavy rains in recent years accompanied by a special heavy rainfall warning along the rainy season front include the heavy rains experienced in July, 2018 (heavy rains in western Japan) and in July, 2020, each of which was largely caused by the stagnation of the linear precipitation zone.



Information released by the Japan Meteorological Agency

The Japan Meteorological Agency releases disaster prevention and meteorological information such as weather warnings and precautionary warnings via television, radio and the Internet when severe weather phenomena such as those that can lead to disasters are expected. When these special heavy rainfall warnings, landslide disaster alert information, flood warnings, and others are released, review your situation to mitigate the risks and to understand any imminent danger to your home.

Disaster prevention and weather information from the Japan Meteorological Agency

Danger of disaster	High	Special heavy rainfall warning	Significantly increased risk of major disasters
		Landslide warning information	When the risk of a landslide caused by heavy rain increases, the Prefecture and the Japan Meteorological Agency jointly make a joint announcement.
		Heavy record-breaking rainfall in a short amount of time information	Announced when heavy rainfall has been observed once every few years (90 mm of rainfall per hour in Higashiomi City)
		Heavy rain warning and flood warning	Situations where a serious disaster is likely to occur because of heavy rainfall or flooding
		Heavy rainfall warning and flood alert	Situations where a disaster is likely to occur because of heavy rainfall or flooding