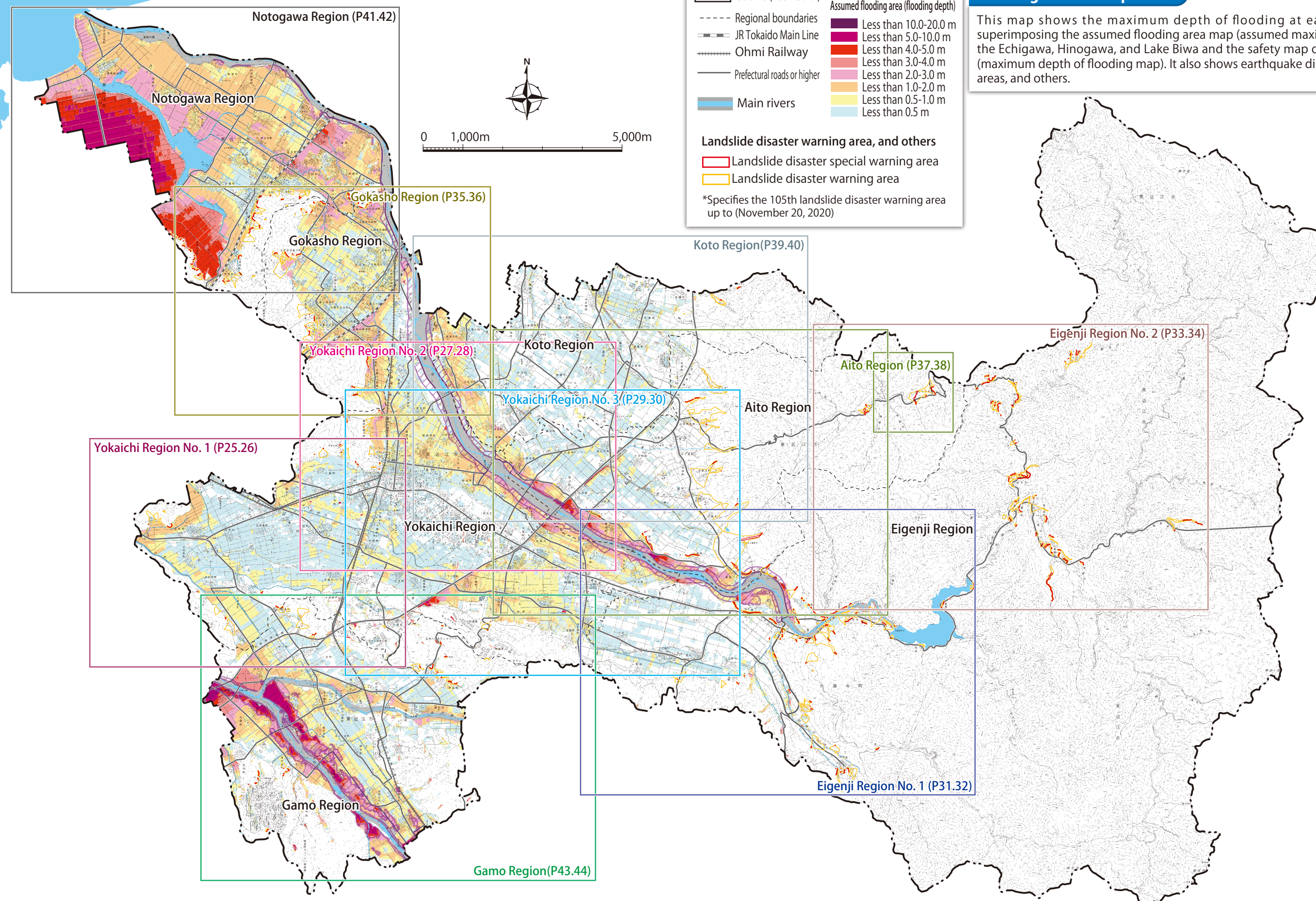


3-3 Flooding Hazard Map All regions Diagram

Flooding Hazard Map

This map shows the maximum depth of flooding at each point by superimposing the assumed flooding area map (assumed maximum scale) of the Echigawa, Hinogawa, and Lake Biwa and the safety map of destinations (maximum depth of flooding map). It also shows earthquake disaster warning areas, and others.



Assumed flooding area map planned scale and assumed maximum scale

The assumed flooding area map has two diagrams. Planned Scale and Assumed Maximum Scale Higashiomi City has prepared a flood hazard map by superimposing a map of the assumed largest flooding areas in order to consider evacuation actions based on flooding assumptions with higher risk.

- Plan scale An assumed flooding area that assumes the amount of rainfall (planned scale rainfall) used to formulate the basic policy for long-term river development. The goal is to eliminate the occurrence of flooding caused by this rainfall through future river development.
- Assumed maximum scale ... An assumed flooding area that assumes the largest rainfall assumed in the region (assumed maximum rainfall) based on domestic rainfall records. Rainfall that makes it difficult to protect facilities such as embankments and the like. The goal is to at least protect lives through evacuation, and the like.