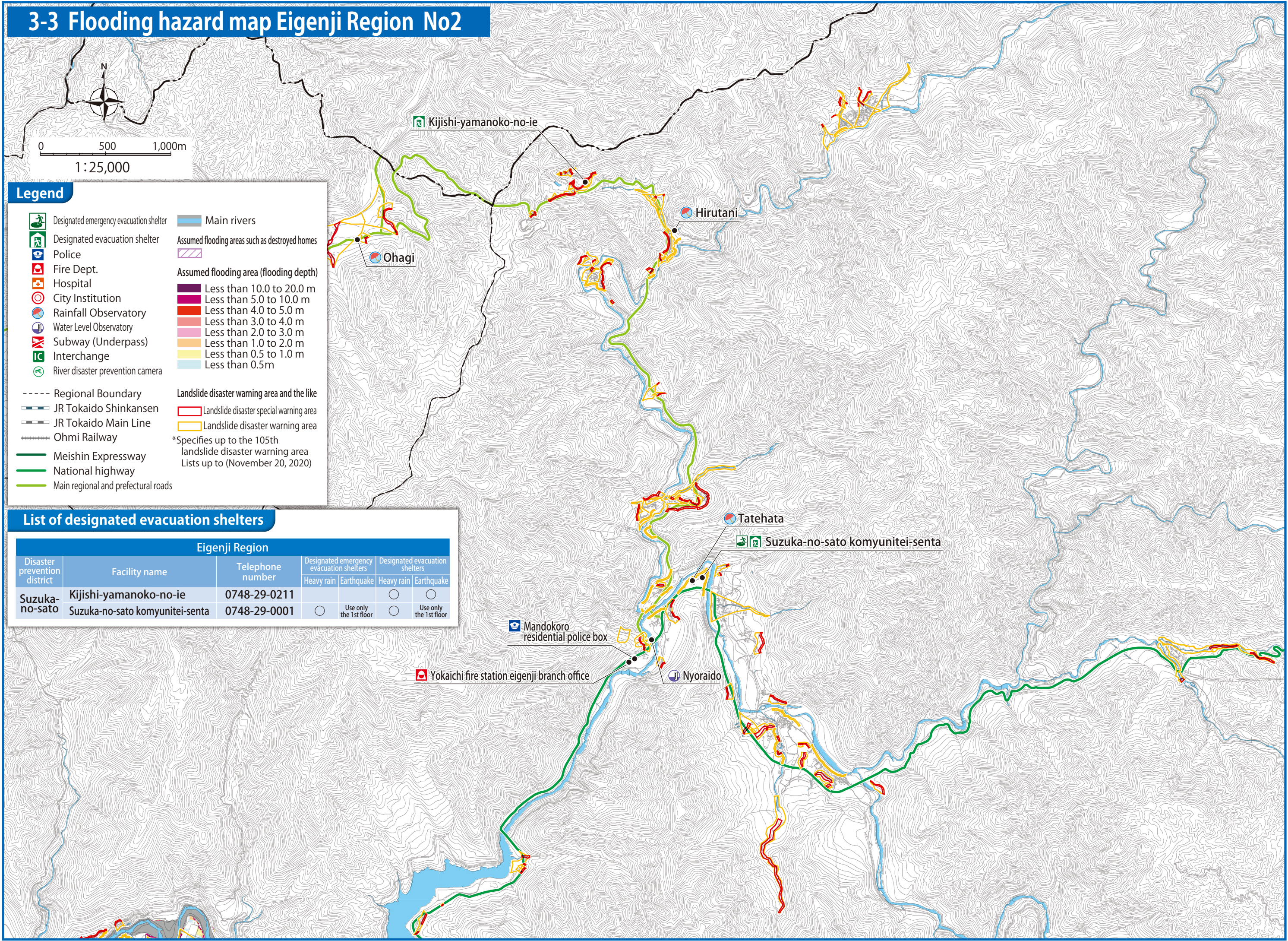


### 3-3 Flooding hazard map Eigenji Region No2



#### Legend

- Designated emergency evacuation shelter
- Designated evacuation shelter
- Police
- Fire Dept.
- Hospital
- City Institution
- Rainfall Observatory
- Water Level Observatory
- Subway (Underpass)
- Interchange
- River disaster prevention camera
- Main rivers
- Assumed flooding areas such as destroyed homes
- Assumed flooding area (flooding depth)
  - Less than 10.0 to 20.0 m
  - Less than 5.0 to 10.0 m
  - Less than 4.0 to 5.0 m
  - Less than 3.0 to 4.0 m
  - Less than 2.0 to 3.0 m
  - Less than 1.0 to 2.0 m
  - Less than 0.5 to 1.0 m
  - Less than 0.5m
- Landslide disaster warning area and the like
  - Landslide disaster special warning area
  - Landslide disaster warning area
- \*Specifies up to the 105th landslide disaster warning area Lists up to (November 20, 2020)
- Regional Boundary
- JR Tokaido Shinkansen
- JR Tokaido Main Line
- Ohmi Railway
- Meishin Expressway
- National highway
- Main regional and prefectural roads

#### List of designated evacuation shelters

Eigenji Region						
Disaster prevention district	Facility name	Telephone number	Designated emergency evacuation shelters		Designated evacuation shelters	
			Heavy rain	Earthquake	Heavy rain	Earthquake
Suzuka-no-sato	Kijishi-yamanoko-no-ie	0748-29-0211			○	○
	Suzuka-no-sato komyunitei-senta	0748-29-0001	○	Use only the 1st floor	○	Use only the 1st floor