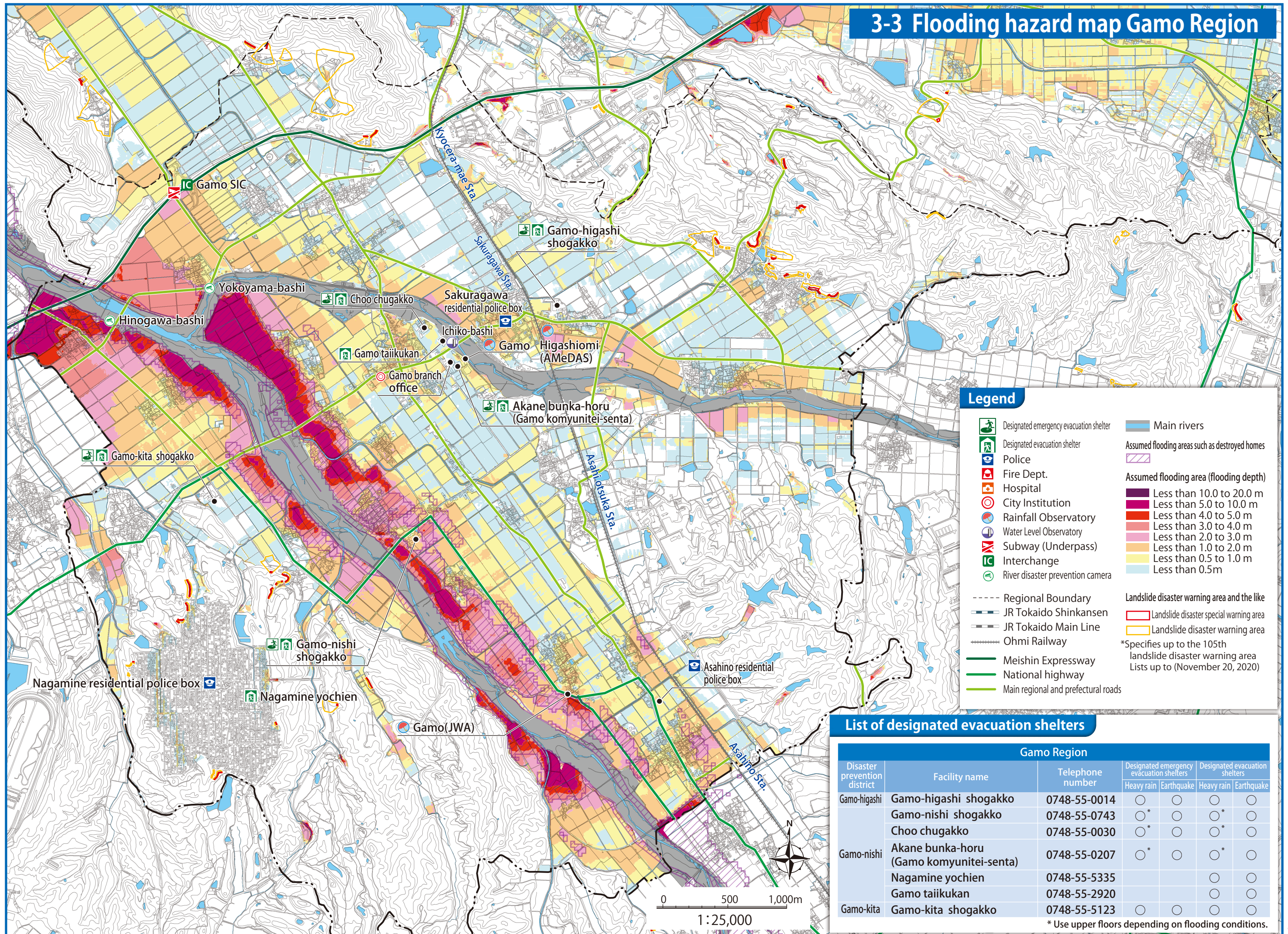


3-3 Flooding hazard map Gamo Region



Legend

- Designated emergency evacuation shelter
- Designated evacuation shelter
- Police
- Fire Dept.
- Hospital
- City Institution
- Rainfall Observatory
- Water Level Observatory
- Subway (Underpass)
- Interchange
- River disaster prevention camera
- Main rivers
- Assumed flooding areas such as destroyed homes
- Assumed flooding area (flooding depth)
 - Less than 10.0 to 20.0 m
 - Less than 5.0 to 10.0 m
 - Less than 4.0 to 5.0 m
 - Less than 3.0 to 4.0 m
 - Less than 2.0 to 3.0 m
 - Less than 1.0 to 2.0 m
 - Less than 0.5 to 1.0 m
 - Less than 0.5m
- Regional Boundary
- JR Tokaido Shinkansen
- JR Tokaido Main Line
- Ohmi Railway
- Meishin Expressway
- National highway
- Main regional and prefectural roads
- Landslide disaster warning area and the like
 - Landslide disaster special warning area
 - Landslide disaster warning area

*Specifies up to the 105th landslide disaster warning area Lists up to (November 20, 2020)

List of designated evacuation shelters

Gamo Region						
Disaster prevention district	Facility name	Telephone number	Designated emergency evacuation shelters		Designated evacuation shelters	
			Heavy rain	Earthquake	Heavy rain	Earthquake
Gamo-higashi	Gamo-higashi shogakko	0748-55-0014	○	○	○	○
	Gamo-nishi shogakko	0748-55-0743	○*	○	○*	○
	Choo chugakko	0748-55-0030	○*	○	○*	○
Gamo-nishi	Akane bunka-horu (Gamo komyunitai-senta)	0748-55-0207	○*	○	○*	○
	Nagamine yochien	0748-55-5335			○	○
	Gamo taiikukan	0748-55-2920			○	○
Gamo-kita	Gamo-kita shogakko	0748-55-5123	○	○	○	○

* Use upper floors depending on flooding conditions.