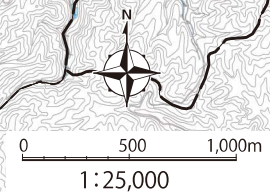


3-3 Flooding hazard map Eigenji Region No2

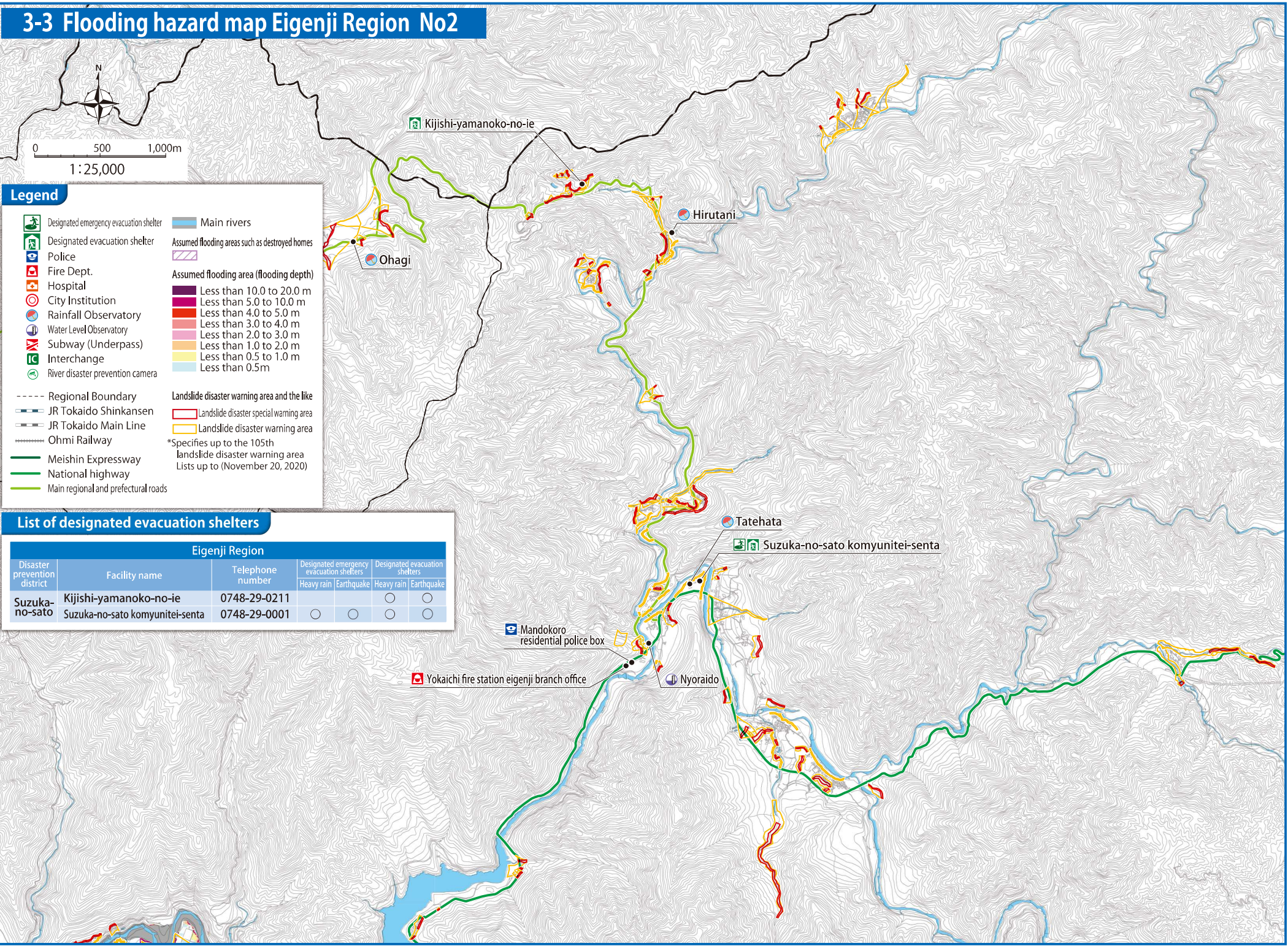


Legend

Designated emergency evacuation shelter	Main rivers
Designated evacuation shelter	Assumed flooding areas such as destroyed homes
Police	Assumed flooding area (flooding depth)
Fire Dept.	Less than 10.0 to 20.0 m
Hospital	Less than 5.0 to 10.0 m
City Institution	Less than 4.0 to 5.0 m
Rainfall Observatory	Less than 3.0 to 4.0 m
Water Level Observatory	Less than 2.0 to 3.0 m
Subway (Underpass)	Less than 1.0 to 2.0 m
Interchange	Less than 0.5 to 1.0 m
River disaster prevention camera	Less than 0.5m
Regional Boundary	Landslide disaster warning area and the like
JR Tokaido Shinkansen	Landslide disaster special warning area
JR Tokaido Main Line	Landslide disaster warning area
Ohmi Railway	<small>*Specifies up to the 105th landslide disaster warning area Lists up to (November 20, 2020)</small>
Meishin Expressway	
National highway	
Main regional and prefectural roads	

List of designated evacuation shelters

Eigenji Region		Telephone number	Designated emergency evacuation shelters		Designated evacuation shelters	
Disaster prevention district	Facility name		Heavy rain	Earthquake	Heavy rain	Earthquake
Suzuka-no-sato	Kijishi-yamanoko-no-ie	0748-29-0211			○	○
	Suzuka-no-sato komyunitei-senta	0748-29-0001	○	○	○	○



Common Edition

Earthquake Edition

Wind and Water Hazards Edition

Your Family's Disaster Prevention Plan

Common Edition

Earthquake Edition

Wind and Water Hazards Edition

Your Family's Disaster Prevention Plan